

| Parking Tariff | | | |
|--|-------------|---------------|--------|
| | Tariff Band | Tariff Period | Charge |
| Monday - Saturday 07:30 - 20:00 | Free | 30 minutes | £0.00 |
| | Band 1 | 1 hour | £0.70 |
| | Band 2 | 2 hours | £1.30 |
| | Band 3 | 3 hours | £1.60 |
| | Band 4 | 4 hours | £2.20 |
| | Band 5 | 5 hours | £3.00 |
| Sunday and Public Holidays 07:30 - 20:00 | Band 6 | All Day | £3.80 |
| | Band 1 | All Day | £1.50 |

Key:

Long and Short stay pay and display parking bays Monday - Sunday 07:30 - 20:00

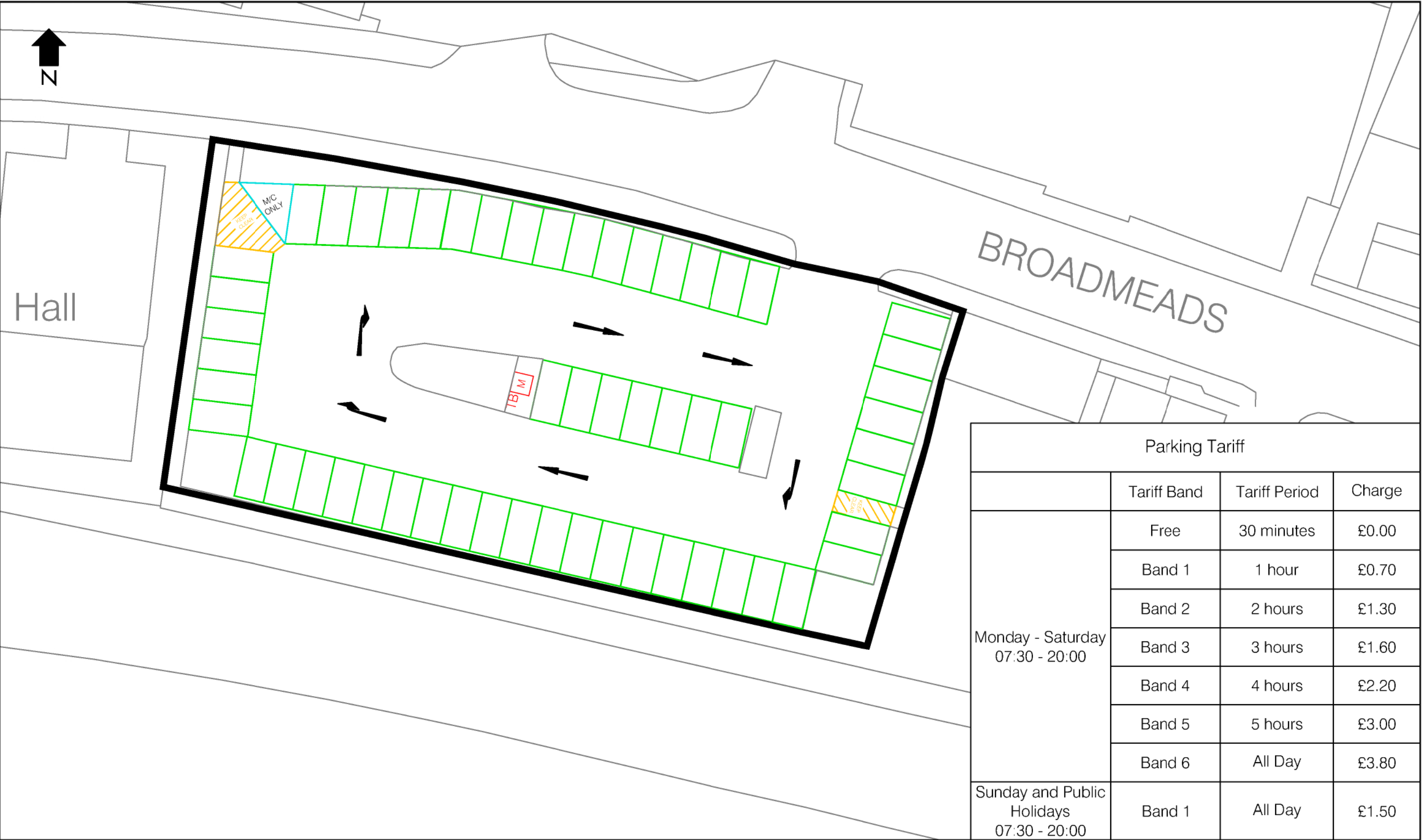
Disabled parking bays

Ticket machine

Tariff board

Parking place boundary

| | | | | | |
|---|---|--|--|----------------|------------------|
| East Herts Council Wallfields Pegs Lane Hertford SG13 8EQ | Drawing Title: AMWELL END EAST CAR PARK LAYOUT WARE | Order title: East Hertfordshire District Council (Ware) (Off-Street Parking Places) Order 2014 | Drawing Reference number: WCP 01/04 | Drawn by: SD | Date: 14-11-2022 |
| | | | | Checked by: TC | Scale: NTS |



| Parking Tariff | | | |
|--|-------------|---------------|--------|
| | Tariff Band | Tariff Period | Charge |
| Monday - Saturday 07:30 - 20:00 | Free | 30 minutes | £0.00 |
| | Band 1 | 1 hour | £0.70 |
| | Band 2 | 2 hours | £1.30 |
| | Band 3 | 3 hours | £1.60 |
| | Band 4 | 4 hours | £2.20 |
| | Band 5 | 5 hours | £3.00 |
| Sunday and Public Holidays 07:30 - 20:00 | Band 6 | All Day | £3.80 |
| | Band 1 | All Day | £1.50 |

Key:

Long and Short stay pay and display parking bays Monday - Sunday 07:30 - 20:00

Motorcycle bay

Parking place boundary

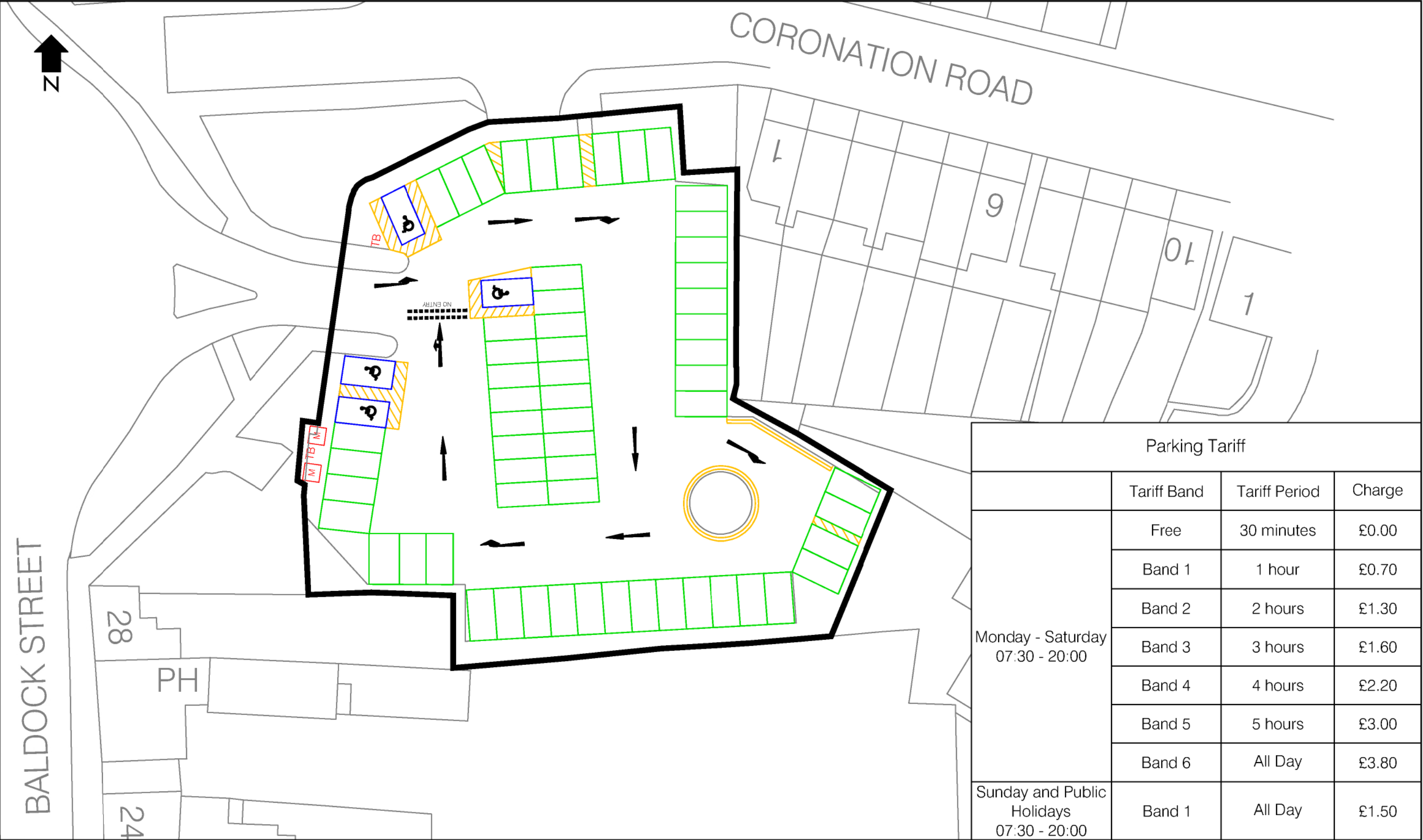
M

Ticket machine

TB

Tariff board

| | | | | | |
|---|---|--|--|----------------|------------------|
| East Herts Council Wallfields Pegs Lane Hertford SG13 8EQ | Drawing Title: AMWELL END WEST CAR PARK LAYOUT WARE | Order title: East Hertfordshire District Council (Ware) (Off-Street Parking Places) Order 2014 | Drawing Reference number: WCP 02/04 | Drawn by: SD | Date: 14-11-2022 |
| | | | | Checked by: TC | Scale: NTS |



| Parking Tariff | | | |
|--|-------------|---------------|--------|
| | Tariff Band | Tariff Period | Charge |
| Monday - Saturday 07:30 - 20:00 | Free | 30 minutes | £0.00 |
| | Band 1 | 1 hour | £0.70 |
| | Band 2 | 2 hours | £1.30 |
| | Band 3 | 3 hours | £1.60 |
| | Band 4 | 4 hours | £2.20 |
| | Band 5 | 5 hours | £3.00 |
| Sunday and Public Holidays 07:30 - 20:00 | Band 6 | All Day | £3.80 |
| | Band 1 | All Day | £1.50 |

Key:

Long and Short stay pay and display parking bays Monday - Sunday 07:30 - 20:00

Disabled parking bays

Parking place boundary

Ticket machine


Tariff board

| | | | | | |
|---|--|--|--|----------------|------------------|
| East Herts Council Wallfields Pegs Lane Hertford SG13 8EQ | Drawing Title: BALDOCK STREET CAR PARK LAYOUT WARE | Order title: East Hertfordshire District Council (Ware) (Off-Street Parking Places) Order 2014 | Drawing Reference number: WCP 03/04 | Drawn by: SD | Date: 14-11-2022 |
| | | | | Checked by: TC | Scale: NTS |




| Parking Tariff | | | |
|--|-------------|---------------|--------|
| | Tariff Band | Tariff Period | Charge |
| Monday - Saturday 07:30 - 20:00 | Free | 30 minutes | £0.00 |
| | Band 1 | 1 hour | £0.70 |
| | Band 2 | 2 hours | £1.30 |
| | Band 3 | 3 hours | £1.60 |
| | Band 4 | 4 hours | £2.20 |
| | Band 5 | 5 hours | £3.00 |
| Sunday and Public Holidays 07:30 - 20:00 | Band 1 | All Day | £1.50 |


Key:




Long and Short stay pay and display parking bays Monday - Sunday 07:30 - 20:00




Long and Short stay parent and child pay and display parking bays Monday - Sunday 07:30 - 20:00



Parking place boundary

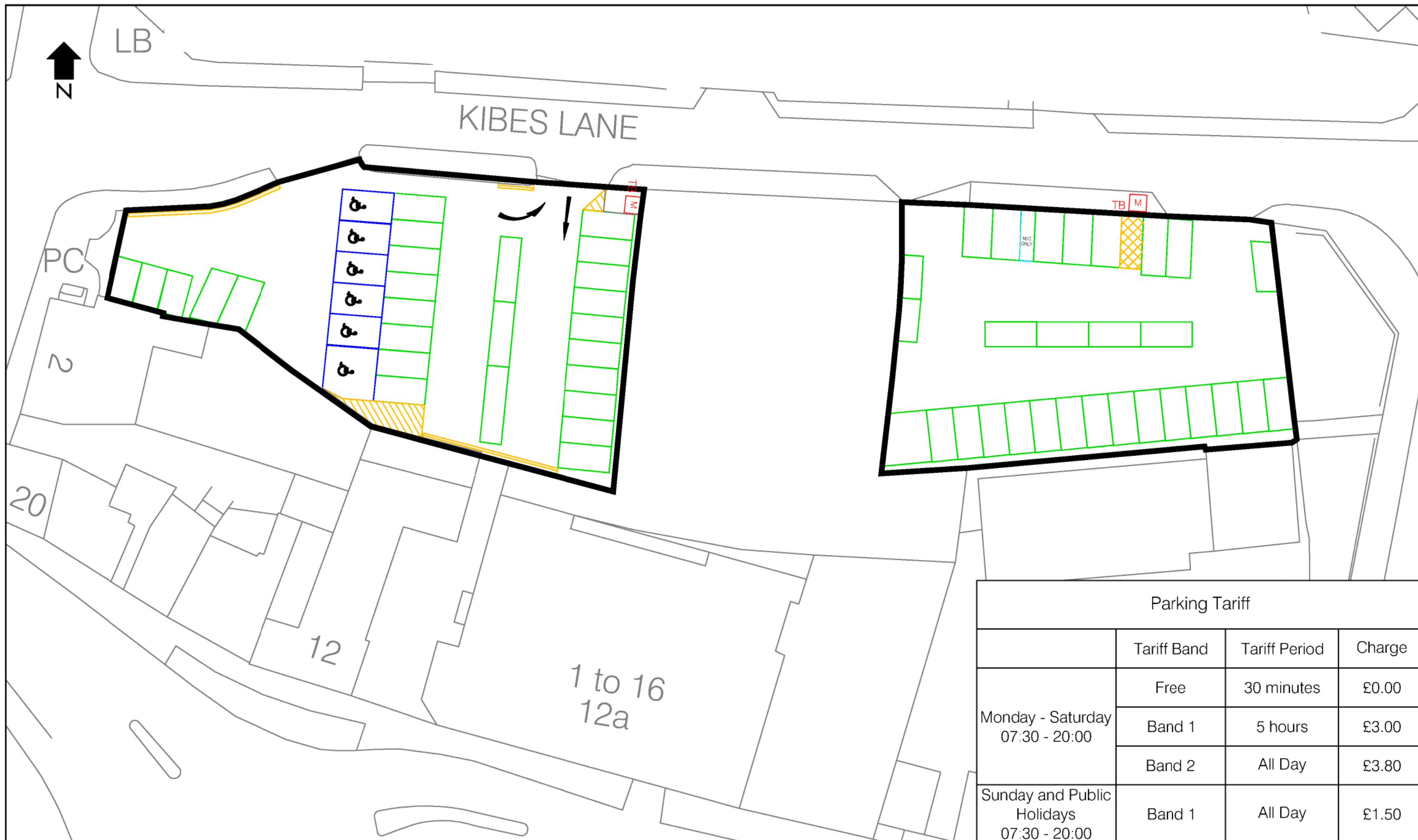


Ticket machine



Tariff board

| | | | | | |
|---|--|---|--|----------------|------------------|
|  <div>East Herts Council Wallfields Pegs Lane Hertford SG13 8EQ</div> | Drawing Title: KIBES LANE NORTH CAR PARK LAYOUT WARE | Order title: East Hertfordshire District Council (Ware) (Off- Street Parking Places) Order 2014 | Drawing Reference number: WCP 04/04 | Drawn by: SD | Date: 14-11-2022 |
| | | | | Checked by: TC | Scale: NTS |



| Parking Tariff | | | |
|--|-------------|---------------|--------|
| | Tariff Band | Tariff Period | Charge |
| Monday - Saturday 07:30 - 20:00 | Free | 30 minutes | £0.00 |
| | Band 1 | 5 hours | £3.00 |
| | Band 2 | All Day | £3.80 |
| Sunday and Public Holidays 07:30 - 20:00 | Band 1 | All Day | £1.50 |

Key:

Long stay pay and display parking bays Monday - Sunday 07:30 - 20:00

Motorcycle bay

Disabled parking bays

Parking place boundary

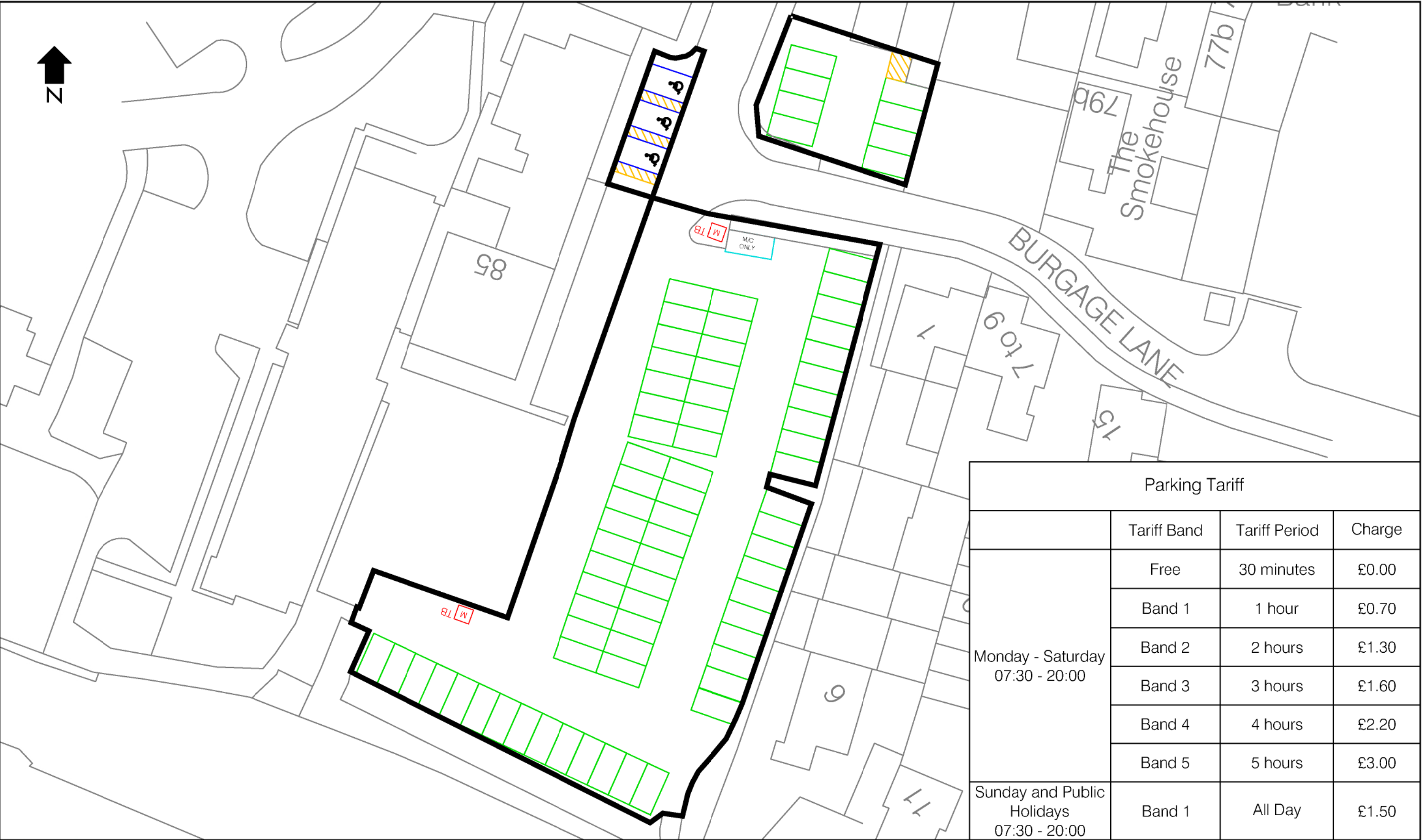
M

Ticket machine

TB

Tariff board

| | | | | | |
|--|--|--|--|----------------|------------------|
|  East Herts Council Wallfields Pegs Lane Hertford SG13 8EQ | Drawing Title: KIBES LANE SOUTH CAR PARK LAYOUT WARE | Order title: East Hertfordshire District Council (Ware) (Off-Street Parking Places) Order 2014 | Drawing Reference number: WCP 05/05 | Drawn by: SD | Date: 14-11-2022 |
| | | | | Checked by: TC | Scale: NTS |



| Parking Tariff | | | |
|--|-------------|---------------|--------|
| | Tariff Band | Tariff Period | Charge |
| Monday - Saturday 07:30 - 20:00 | Free | 30 minutes | £0.00 |
| | Band 1 | 1 hour | £0.70 |
| | Band 2 | 2 hours | £1.30 |
| | Band 3 | 3 hours | £1.60 |
| | Band 4 | 4 hours | £2.20 |
| | Band 5 | 5 hours | £3.00 |
| Sunday and Public Holidays 07:30 - 20:00 | Band 1 | All Day | £1.50 |

Key:

Long and Short stay pay and display parking bays Monday - Sunday 07:30 - 20:00

Motorcycle bay

Disabled parking bays

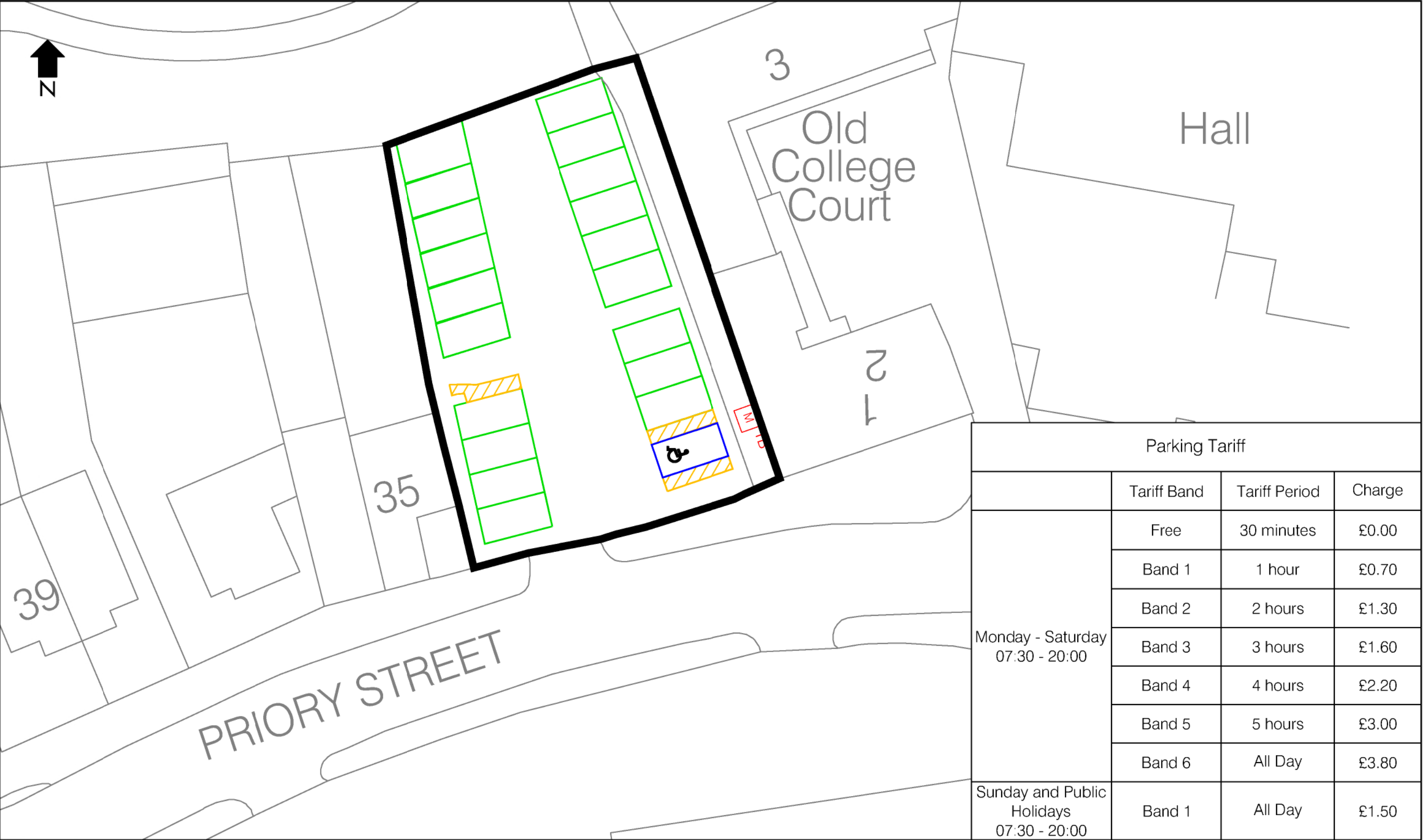
Parking place boundary

M

Ticket machine

TB

Tariff board



| Parking Tariff | | | |
|--|-------------|---------------|--------|
| | Tariff Band | Tariff Period | Charge |
| Monday - Saturday 07:30 - 20:00 | Free | 30 minutes | £0.00 |
| | Band 1 | 1 hour | £0.70 |
| | Band 2 | 2 hours | £1.30 |
| | Band 3 | 3 hours | £1.60 |
| | Band 4 | 4 hours | £2.20 |
| | Band 5 | 5 hours | £3.00 |
| | Band 6 | All Day | £3.80 |
| Sunday and Public Holidays 07:30 - 20:00 | Band 1 | All Day | £1.50 |

Key:



Long and Short stay pay and display parking bays Monday - Sunday 07:30 - 20:00



Disabled parking bays



Parking place boundary



Ticket machine



Tariff board

| | | | | | |
|---|---|--|--|----------------|------------------|
|  <div>East Herts Council Wallfields Pegs Lane Hertford SG13 8EQ</div> | Drawing Title: PRIORY STREET CAR PARK LAYOUT WARE | Order title: East Hertfordshire District Council (Ware) (Off-Street Parking Places) Order 2014 | Drawing Reference number: WCP 08/04 | Drawn by: SD | Date: 14-11-2022 |
| | | | | Checked by: TC | Scale: NTS |